



Certificate of Analysis

CANNABUSINESS LABORATORIES, LLC

Customer:

Tyler Marks
200 Heliport Loop Road
Bridgeport, WV 26330

Sample ID **230215011**
Order Number **CB230215004**
Sample Name **Full Spec Tincture Day Peppermint**

Received Date **2/17/2023**
COA Released **2/21/2023**

External Sample ID **FSTDP021523**

Batch Number **FSTDP021523**
Product Type **Edible**
Sample Type **Edible**

Comments

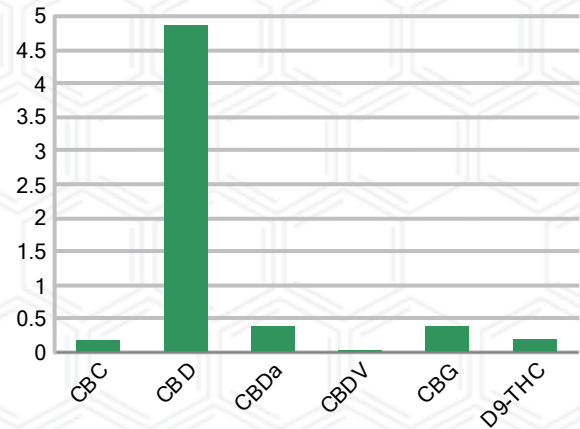
CANNABINOID PROFILE

Analyte	LOQ (%)	% Weight	mg/g
CBC	0.01	0.177	1.769
CBD	0.01	4.861	48.61
CBDa	0.01	0.386	3.865
CBDV	0.01	0.027	0.268
CBG	0.01	0.389	3.890
CBGa	0.01	ND	ND
CBN	0.01	ND	ND
d8-THC	0.01	ND	ND
d9-THC	0.01	0.188	1.879
THCa	0.01	ND	ND
Total Cannabinoids		6.029	60.29
Total Potential THC		0.188	1.879
Total Potential CBD		5.200	52.00
Total Potential CBG		0.389	3.890
Ratio of Total Potential CBD to Total Potential THC			27.66 : 1
Ratio of Total Potential CBG to Total Potential THC			2.07 : 1

SAMPLE IMAGE



CANNABINOIDS % Weight



*Total Cannabinoids refers to the sum of all cannabinoids detected.

*Total Potential CBD = (0.877 x CBDa) + CBD. *Total Potential THC = (0.877 x THCa) + THC. *Total Potential CBG = (0.877 x CBGa) + CBG.

*Total Potential THC/CBD are calculated to take into account the loss of an acid group during decarboxylation.



J. Hobgood
Laboratory Manager
SIGNATURE

Jamie Hobgood
LABORATORY MANAGER

02/21/2023 9:52 AM
DATE

This product has been tested by CannaBusiness Laboratories using validated testing methodologies and a quality system. Values reported relate only to the product tested. CannaBusiness Laboratories makes no claims as to the efficacy, safety, or other risks associated with any detected or non-detected levels of any compounds reported herein. This Certificate shall not be reproduced except in full, without the written permission of CannaBusiness Laboratories. Photo is of sample received by the lab and may vary from final packaging. The results apply to the sample as received.



Certificate of Analysis

CANNABUSINESS LABORATORIES, LLC

Customer

Tyler Marks
200 Heliport Loop Road
Bridgeport, WV 26330



Sample Name: Full Spec Tincture Day Peppermint
Sample ID: 230215011
Order Number: CB230215004
Product Type: Edible
Sample Type: Edible
Received Date: 02/17/2023
Batch Number: FSTD021523
COA released: 02/21/2023 9:52 AM

Potency (mg/g)			
Date Tested: 02/20/2023		Method: CB-SOP-028	
Instrument:			
0.188 %	5.200 %	6.029 %	60.29 mg/g
Total THC	Total CBD	Total Cannabinoids	Total Cannabinoids

Analyte	Result	Units	LOQ	Result	Units
CBC (Cannabichromene)	0.177	%	0.010	1.769	mg/g
CBD (Cannabidiol)	4.861	%	0.010	48.61	mg/g
CBDa (Cannabidiolic Acid)	0.386	%	0.010	3.865	mg/g
CBDV (Cannabidivarin)	0.027	%	0.010	0.268	mg/g
CBG (Cannabigerol)	0.389	%	0.010	3.890	mg/g
CBGa (Cannabigerolic Acid)	ND	%	0.010	ND	mg/g
CBN (Cannabinol)	ND	%	0.010	ND	mg/g
D8-THC (D8-Tetrahydrocannabinol)	ND	%	0.010	ND	mg/g
D9-THC (D9-Tetrahydrocannabinol)	0.188	%	0.010	1.879	mg/g
THCa (Tetrahydrocannabinolic Acid)	ND	%	0.010	ND	mg/g



J. Hobgood
Laboratory Manager

Jamie Hobgood

02/21/2023 9:52 AM

SIGNATURE

DATE

NT = Not tested, ND = Not detected; LOQ = Limit of Quantitation; <LOQ = Detected; >ULOL = Above upper limit of linearity; CFU/g = Colony forming units per 1 gram; TNTC = Too numerous to count

This product has been tested by CannaBusiness Laboratories using validated testing methodologies and a quality system. Values reported relate only to the product tested. CannaBusiness Laboratories makes no claims as to the efficacy, safety, or other risks associated with any detected or non-detected levels of any compounds reported herein. This Certificate shall not be reproduced except in full, without the written permission of CannaBusiness Laboratories. Photo is of sample received by the lab and may vary from final packaging. The results apply to the sample as received.